

September, 2013

Volume 17, Issue 09



TAPPING THE

K.E.G.S.

KOMPUTER ENTHUSIASTS OF GREATER SEATTLE

Prez Says:

Jon Mercer

Welcome to September where the days start to get shorter and the nights cooler.

Microsoft went RTM with Windows 8.1 on August 27th and also announced that 8.1 will be available to the general consumer on October 17th for download and October 18th in stores. It will be a free upgrade for Windows 8.0 users. If you have Windows 8.1 Preview, you will have to do a clean install. You should also be able to upgrade from Windows 7 to 8.1 using the standard install DVD.

If you are looking for a new cell phone and also plan on taking a fair number of pictures with it, Nokia's new 1020 with a 41 MP sensor might be something to consider if your carrier has it. It takes a 5MP and 41MP at the same time--one for sharing and the other for personal use.

http://www.windowsphone.com/en-US/cmpn/nokia-lumia-1020?cmpid=sem_47K9taO2_pcrd_3057805382_kwd_nokia%201020_pmt_e

There is talk that Moore's law (first described in 1965) that says the number of transistors will double every two years might finally be coming to an end due to the cost associated with the development of newer more compact processors. Though it is still a couple of years away, Intel is saying they can probably get down to 5 nanometer spacing. Currently the Ivy Bridge and Haswell (which



September, 2013

Volume 17, Issue 09

TAPPING THE

K . E . G . S .

KOMPUTER ENTHUSIASTS OF GREATER SEATTLE

Prez Says:

Jon Mercer

are the latest) are built on 22nm. They are figuring that Moore's Law will end around 2022 which is pretty good for something that the creator (Intel cofounder Gordon Moore) figured would only last maybe a decade.

http://news.cnet.com/8301-1001_3-57600373-92/end-of-moores-law-its-not-just-about-physics/#

Nissan has announced that by 2020 it will have self-driving cars on the road which will hopefully start to make traffic better since a lot of traffic is due to timid drivers and less accidents due to those of us that stay up way too late and try to just make it home to go to bed.

<http://www.cnn.com/2013/08/27/tech/innovation/nissan-driverless-car/index.html>

For those of you that are interested in gaming (or have kids/grandkids that are) and are thinking of getting the Microsoft Xbox One or the Sony PlayStation 4, they will both be coming out mid November.

Our September meeting will be at its usual location in Kirkland at the Peter Kirk Community Center.

Jon Mercer — President

KEGS GENERAL MEETING AND ASSOCIATED SIGS

KEGS T-shirts/Vests

Remember, you score extra KEGABUCK\$ when you wear your KEGS shirts to SIGS and the General Meetings! (NOTE: This extra credit is not honored at the PIG SIG.)

We still have a few left of various sizes. Then we will order more. So why wait? Pick yours up at the next general meeting.

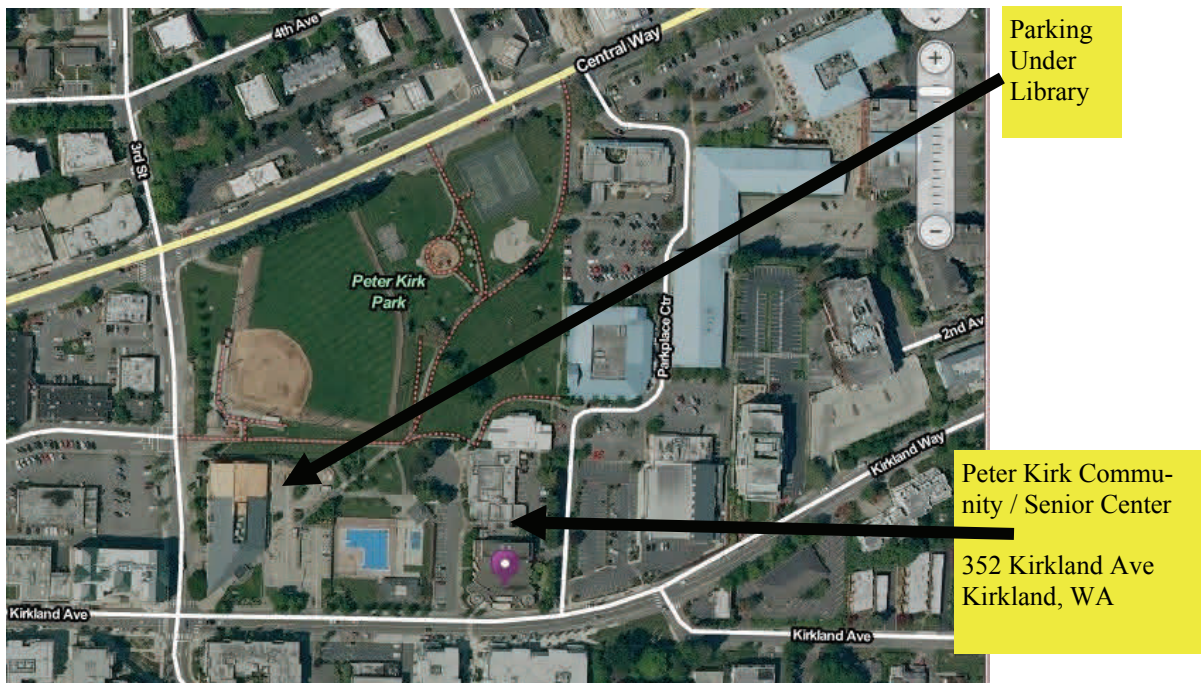
General Meetings at the Peter Kirk Community / Senior Center - 325 Kirkland Ave., Kirkland, WA 98033

Day of Month	Time	Location	SIG / Email contact	SIG Leader
2nd Monday	6 PM - 7 PM	Kirkland's Peter Kirk Community Center	Technology Corner betacode@hotmail.com	Steve Fondren
2nd Monday	7 PM - 9 PM	Kirkland's Peter Kirk Community Center	KEGS General Meeting	
2nd Monday	9:30 PM - ? PM	Outback Steakhouse 12120 NE 85 th, Kirkland	Pig SIG sallyannmowrey@msn.com	Sally Ann Mowrey 206-902-7381

DRIVING INSTRUCTIONS: From I-405, take the N.E. 85th ST. exit (exit number 18) toward KIRKLAND (headed West). Immediately move to the center lane and take a left at the first light onto Kirkland Way (If you went right you would be on 114th Ave NE). Just stay on Kirkland Way and it will turn into Kirkland Ave.

The Peter Kirk Community Center / Senior Center is part of a string of three connected buildings. At the street (Kirkland Way) is Kirkland's Performance Center (350 Kirkland Ave.), then comes the Peter Kirk Community Center and farthest from the street is The Kirkland Teen Union Building.

There is a parking area to the West of this building but you can also park in the Kirkland Library's covered parking area just a little farther to the West (1/4 block past the Performing Arts Center).



KEGS SIG MEETINGS:

NEW SIG CHART

Notice that this SIG chart no longer lists actual dates. Please check our KEGS calendar (at <http://www.kegs.org/Calendar.html>) for actual dates AND POSSIBLE CANCELLATIONS of the upcoming meeting that you want to attend.

Contact the SIG leaders to find out what presentations that they have planned for their upcoming meetings.

KEGS T-shirts

Remember, you score extra KEGABUCK\$ when you wear your KEGS shirts to SIGS and the General Meetings! We still have a few left of various sizes. Then we will order more. So why wait? Pick yours up at the next meeting.

Meetings at the North Bellevue Community / Senior Center - 4063 148th Ave NE, Bellevue, WA

Day of Month	Time	Location	SIG / Email contact	SIG Leader
2nd Tuesday	7 PM - 9 PM	Computer Lab	Computer Support SIG - N. Bellevue j_m_mraz@hotmail.com (Computer repair & maintenance)	Joe Mraz 425-747-2433
2nd Wednesday	7 PM - 9 PM	Conf. room D	Computer Use and Optimization ctheprof@aol.com	Carl Von Papp 425-643-1398
3rd Tuesday	7 PM - 9 PM	Conf. room D	Servers, Networks and Storage daviddodge1@compuserve.com	David Dodge
3rd Wednesday	7 PM - 9 PM	Conf. room D	Small Office / Home Office (SOHO) r_cowger@prodigy.net	Ron Cowger
4th Tuesday	7 PM - 9 PM	Conf. room D	Digital Imaging SIG sallyannmowrey@msn.com	Sally Ann Mowrey 206-902-7381
4th Wednesday	7 PM - 9 PM	Conf. room D	KEGS Board Meeting r_cowger@prodigy.net	Jon Mercer

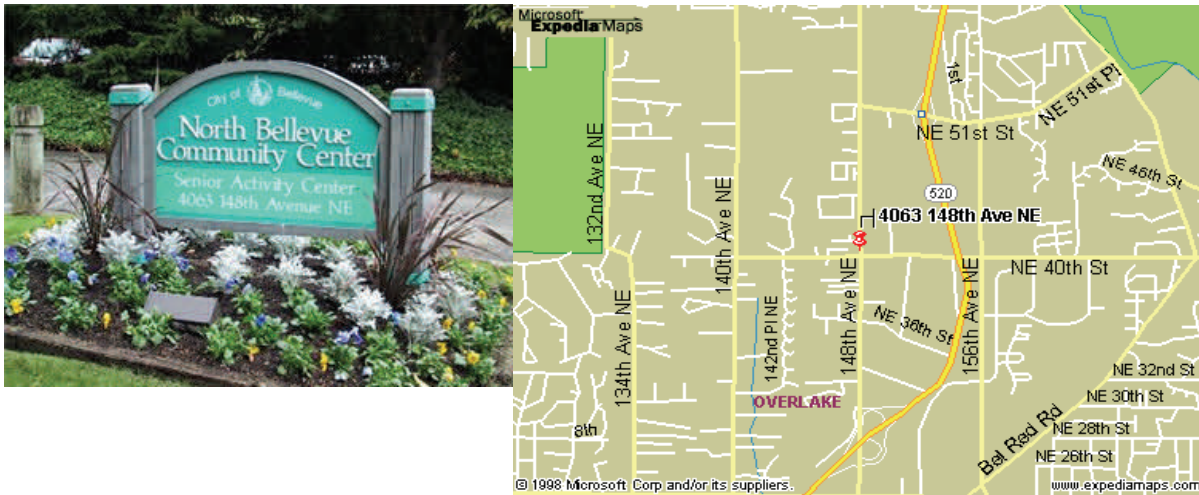
SIG MEETING LOCATIONS:

Please note that the KEGS Board meetings are not held at our General Meeting or SIG meeting locations

- KEGS Board Meetings are currently held at The North Bellevue Community / Senior Center - 4063 148th Ave NE, Bellevue, WA Conf. Rm D, 7-9 PM on the 4 Wed. of the month (Board meetings are public and open to anyone who wants to attend.)

Finding our primary SIG meeting location

DRIVING INSTRUCTIONS: Thanks to the improvements to SR 520, you may now use the new NE 40th St exit. If you are driving towards Redmond, exit and turn left to go over the overpass. If you are coming from Redmond, exit and turn right. Go to 148th Ave NE, and turn right. In very short order, you will see the North Bellevue Community / Senior Center sign on the left side of the roadway.



HISTORY & CONTACT INFO:

KEGS was formed in late 1996 to meet the needs of personal computer users in the Greater Seattle Area. KEGS is a nonprofit organization that holds its general meetings on the second Monday of each month.

In addition, KEGS sponsors a number of special interest groups (SIGs) that meet regularly to share common interests, learn new techniques, and resolve questions about the use of personal computer hardware, accessories, or software.

For a detailed listing of our SIG's, updated information about KEGS activities, and more, please see our web site at:

<http://www.kegs.org>.

Contact us at: Email: info@kegs.org
The Komputer Enthusiasts of Greater Seattle
PMB# 195
677 120th Ave NE, Suite 2A
Bellevue, WA 98005
Or call 425-747-2433 before 9 PM

To submit articles or software reviews for incorporation into this Newsletter, please send them to: newsletter@kegs.org