

July, 2013

Volume 17, Issue 07



TAPPING THE

K . E . G . S .

KOMPUTER ENTHUSIASTS OF GREATER SEATTLE

Prez Says:

Jon Mercer

It is now July, and we have survived another Auction. Thank you everyone for your donations and for your help during the Auction. This is a reminder that this month's General Meeting on Monday, July 8th, will be at the Microsoft Store in Bellevue Square. Steve's Technology Corner is canceled. We will meet at 7 PM, and the presentation will be about Microsoft's OneNote 2013.

Windows 8.1 and the Internet Explorer 11 beta preview were released last Wednesday. 8.1 does have some interesting changes to it. The start button is back, but it just takes you to the modern window. I haven't played with it much, just put it on my system. All types of Windows 8, including RT, can be upgraded to 8.1; however all systems, except RT, will require a full format and re-install when RTM comes out this fall/winter time period. There are also compatibility issues with Windows 8.1. If you want to play with it, I would advise you as of right now to not install it on your primary system. If you would like to try it, you can get it at <http://windows.microsoft.com/en-us/windows-8/preview>. It is a 2.6 GB download, so don't do it over wireless. This is for all versions except Enterprise.

Windows 8 RT will also be released fairly soon with Outlook 2013 RT. For me personally this is a good thing. One of the main reasons I didn't keep my RT was that the mail app was not robust enough for a corporate environment. It was, however, pretty good at home. Outlook 2013 RT is expected to come out around the same time as Windows 8.1 RT within the next couple of weeks.



July, 2013

Volume 17, Issue 07

TAPPING THE

K . E . G . S .

COMPUTER ENTHUSIASTS OF GREATER SEATTLE

Prez Says:

Jon Mercer

Canon has released their EOS 70D prosumer camera. For the most part, there aren't any big differences from the 60D except that it now has dual focus capability (making focusing vastly faster) as well as a new imaging processor. <http://www.engadget.com/2013/07/02/canon-70d-hands-on/>

Intel's new Gen 4 Processor (Haswell) has been released, and it is doing something that processors haven't been able to do before. It is faster but uses a lot less power. If you are planning on upgrading though, you might have to get a new power supply that can handle the new power requirements. <http://www.intel.com/content/www/in/en/processors/core/4th-gen-core-overview-animation.html>

Jon Mercer — President

KEGS GENERAL MEETING AND ASSOCIATED SIGS

KEGS T-shirts/Vests

Remember, you score extra KEGABUCK\$ when you wear your KEGS shirts to SIGS and the General Meetings! (NOTE: This extra credit is not honored at the PIG SIG.)

We still have a few left of various sizes. Then we will order more. So why wait? Pick yours up at the next general meeting.

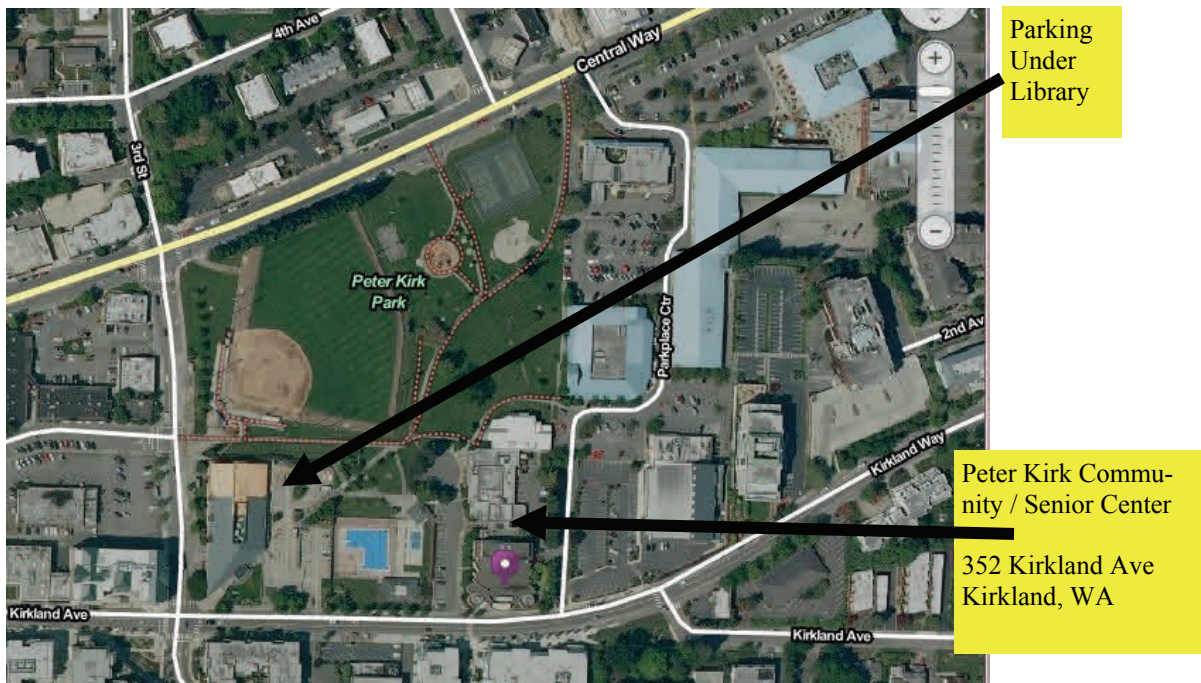
General Meetings at the Peter Kirk Community / Senior Center - 325 Kirkland Ave., Kirkland, WA 98033

Day of Month	Time	Location	SIG / Email contact	SIG Leader
2nd Monday	6 PM - 7 PM	Kirkland's Peter Kirk Community Center	Technology Corner betacode@hotmail.com	Steve Fondren
2nd Monday	7 PM - 9 PM	Kirkland's Peter Kirk Community Center	KEGS General Meeting	
2nd Monday	9:30 PM - ? PM	Outback Steakhouse 12120 NE 85 th, Kirkland	Pig SIG sallyannmowrey@msn.com	Sally Ann Mowrey 206-902-7381

DRIVING INSTRUCTIONS: From I-405, take the N.E. 85th ST. exit (exit number 18) toward KIRKLAND (headed West). Immediately move to the center lane and take a left at the first light onto Kirkland Way (If you went right you would be on 114th Ave NE). Just stay on Kirkland Way and it will turn into Kirkland Ave.

The Peter Kirk Community Center / Senior Center is part of a string of three connected buildings. At the street (Kirkland Way) is Kirkland's Performance Center (350 Kirkland Ave.), then comes the Peter Kirk Community Center and farthest from the street is The Kirkland Teen Union Building.

There is a parking area to the West of this building but you can also park in the Kirkland Library's covered parking area just a little farther to the West (1/4 block past the Performing Arts Center).



KEGS SIG MEETINGS:

NEW SIG CHART

Notice that this SIG chart no longer lists actual dates. Please check our KEGS calendar (at <http://www.kegs.org/Calendar.html>) for actual dates AND POSSIBLE CANCELLATIONS of the upcoming meeting that you want to attend.

Contact the SIG leaders to find out what presentations that they have planned for their upcoming meetings.

KEGS T-shirts

Remember, you score extra KEGABUCK\$ when you wear your KEGS shirts to SIGS and the General Meetings! We still have a few left of various sizes. Then we will order more. So why wait? Pick yours up at the next meeting.

Meetings at the North Bellevue Community / Senior Center - 4063 148th Ave NE, Bellevue, WA

Day of Month	Time	Location	SIG / Email contact	SIG Leader
2nd Tuesday	7 PM - 9 PM	Computer Lab	Computer Support SIG - N. Bellevue j_m_mraz@hotmail.com (Computer repair & maintenance)	Joe Mraz 425-747-2433
2nd Wednesday	7 PM - 9 PM	Conf. room D	Computer Use and Optimization ctheprof@aol.com	Carl Von Papp 425-643-1398
3rd Tuesday	7 PM - 9 PM	Conf. room D	Servers, Networks and Storage daviddodge1@compuserve.com	David Dodge
3rd Wednesday	7 PM - 9 PM	Conf. room D	Small Office / Home Office (SOHO) r_cowger@prodigy.net	Ron Cowger
4th Tuesday	7 PM - 9 PM	Conf. room D	Digital Imaging SIG sallyannmowrey@msn.com	Sally Ann Mowrey 206-902-7381
4th Wednesday	7 PM - 9 PM	Conf. room D	KEGS Board Meeting r_cowger@prodigy.net	Jon Mercer

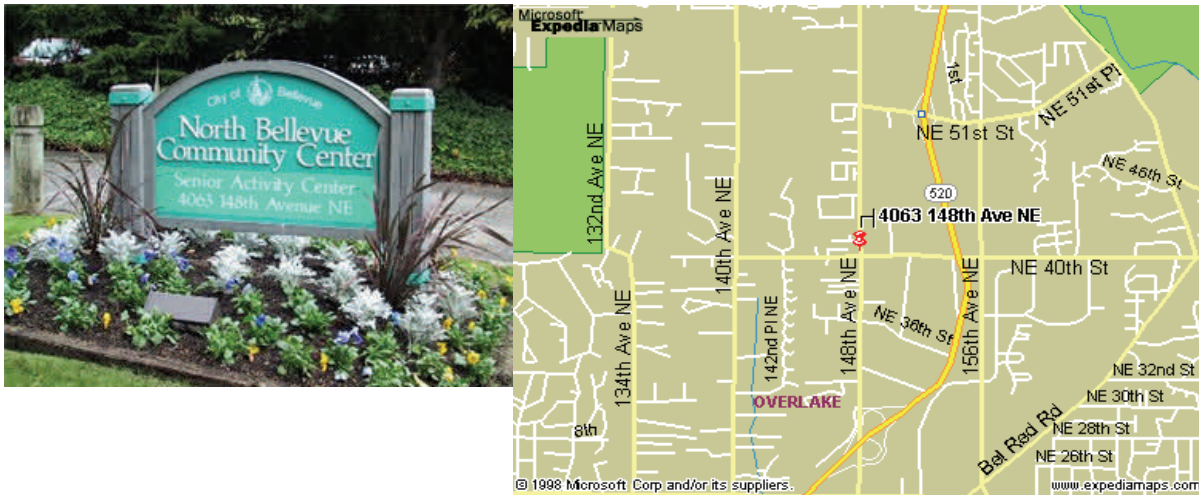
SIG MEETING LOCATIONS:

Please note that the KEGS Board meetings are not held at our General Meeting or SIG meeting locations

- KEGS Board Meetings are currently held at The North Bellevue Community / Senior Center - 4063 148th Ave NE, Bellevue, WA Conf. Rm D, 7-9 PM on the 4 Wed. of the month (Board meetings are public and open to anyone who wants to attend.)

Finding our primary SIG meeting location

DRIVING INSTRUCTIONS: Thanks to the improvements to SR 520, you may now use the new NE 40th St exit. If you are driving towards Redmond, exit and turn left to go over the overpass. If you are coming from Redmond, exit and turn right. Go to 148th Ave NE, and turn right. In very short order, you will see the North Bellevue Community / Senior Center sign on the left side of the roadway.



HISTORY & CONTACT INFO:

KEGS was formed in late 1996 to meet the needs of personal computer users in the Greater Seattle Area. KEGS is a nonprofit organization that holds its general meetings on the second Monday of each month.

In addition, KEGS sponsors a number of special interest groups (SIGs) that meet regularly to share common interests, learn new techniques, and resolve questions about the use of personal computer hardware, accessories, or software.

For a detailed listing of our SIG's, updated information about KEGS activities, and more, please see our web site at:

<http://www.kegs.org>.

Contact us at: Email: info@kegs.org
The Komputer Enthusiasts of Greater Seattle
PMB# 195
677 120th Ave NE, Suite 2A
Bellevue, WA 98005
Or call 425-747-2433 before 9 PM

To submit articles or software reviews for incorporation into this Newsletter, please send them to: newsletter@kegs.org