



April, 2011

Volume 15, Issue 4

TAPPING THE

K . E . G . S .

KOMPUTER ENTHUSIASTS OF GREATER SEATTLE

Prez Says:

Ron Cowger

Do you sometimes get as frustrated with digital equipment as I do? As I have related to you in an earlier column, I bought a very nice 13" Sony laptop computer after the General Meeting that we held at the Microsoft Store in Bellevue. I very much enjoyed its very fast operation and handy portability for about two months until I suffered the famous Blue Screen of Death the evening of March 21st. At the time of the failure I was just reading a news article on the Yahoo web site and I suddenly got the BSD with numerous lines of confusing error codes. One of them suggested that I try a restart so I did. During the restart, the computer displayed an unusual screen asking me to work on the RAID configuration. That seemed odd since I didn't even know that my laptop was configured with a RAID setup. It turns out that it uses RAID 0 to incorporate two drives to appear as one. After trying several restarts and getting the confusing interruption each time, I decided that the computer needed some professional help. The next day I took it back to the Microsoft Store and exercised the warranty that I had purchased with the unit. As of this writing, I have been informed that I should be able to get it back Friday morning. I'll let you know next month if the fix was successful.

I hope that each of you found the information that Bill Butler presented on RAW Capture to Finished Image at the March meeting both interesting and useful. We all owe Bill a big Thank You for filling in at the last minute when Steve could not make it to the meeting. I understand that those who are serious and talented with working with digital photography feel strongly that starting with RAW images gives them the best opportunity to get a finished photo with the best resolution and adjustments. I genuinely admire folks who can do that and wish I had the time and understanding to work on our photos in that manner. I anticipate that Bill probably convinced some of you that using RAW was the best way to go. I'm told that he is a true expert and am sorry that I missed the presentation.

As you recall, Steve gave us some great info at the February General Meeting about his favorite and/or most effective utilities for trouble shooting, repairing and configuring computers. He had a lot of information to cover and didn't get through it all. Therefore, Steve has kindly agreed to continue his discussion at the April General Meeting. He will have his usual Technology Corner SIG starting at 6:00 on the 11th and then present more information about trouble shooting utilities and configuration applications starting at 7:00. I know that I got a lot of good information from Steve's presentation before and I'm confident that we will all benefit from the continuation of the discussion this month.



April, 2011

Volume 15, Issue 4

Prez Says: continued

We are still pursuing the order for our new KEGS vests. We have placed the order with Costco and have been working on three subsequent drafts of the logo that the embroidery subcontractor has provided. Judy Panjeti has worked hard on getting the best possible product available. At this time I do not have a projected delivery date. As I reported earlier, in addition to the green vests, the Board has decided to order twelve of the vests in gray as there seems to be enough interest in that color to justify satisfying the demand.

Again, this month there are two new tips from Sharon Parq Associates added to our monthly newsletter. There is one for using Word and the other for Excel, each designed to expand our knowledge of these applications. If you want access to additional tips from this company, you can go to their websites at word.tips.net or excel.tips.net. I think you'll find the information interesting and useful.

The most recent figures from John Tate indicate that forty-six previous members have renewed their KEGS memberships for 2011. Additionally, we have one new member. I hope that those of you that didn't get around to renewing yet will do so as soon as possible. Renewal forms are available from John Tate, our Treasurer, or you can fill out the form on the KEGS web site, print it out and send it along with your check to the address shown on the form. An even easier way would be to bring your completed form and your check/cash to the next General Meeting and give it to John there.

That's it for now. I will see you at the General Meeting or at your favorite SIG. I wish you happy and safe computing!

Ron Cowger

President

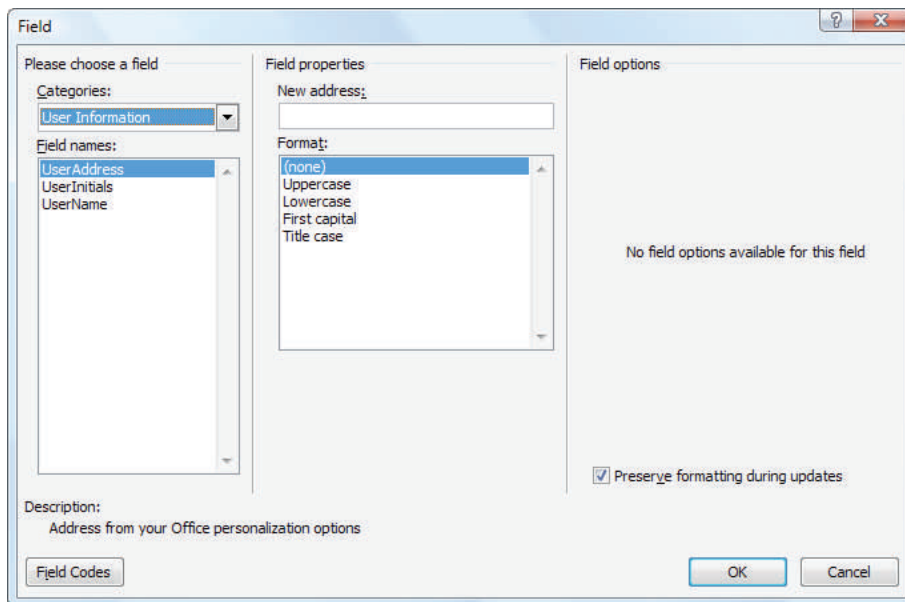


Word Tip of the Month

Inserting the User's Address

Word automatically maintains several items of information about you, as a user. One such item is your address, which is changed on the User Information tab of the Options dialog box. If you want to automatically insert the user address in your documents, you can follow these steps:

1. Position the insertion point where you want the address inserted.
2. Make sure the Insert tab of the ribbon is selected.
3. In the Text group, click Quick Parts. You'll see a drop-down menu.
4. Choose Field. Word displays the Field dialog box.
5. In the Categories drop-down list, choose User Information.



The Field dialog box.

6. In the Field Names list choose UserAddress.
7. Click on OK to close the dialog box and insert your field.



April, 2011

Volume 15, Issue 4

Excel Tip of the Month

Copying Values

There are many ways that you can use Excel's tools to fill out various cells in a worksheet. One of the most common tools is to copy a cell (or cells) and then paste them into other cells. The only problem with this approach is that when you copy cells, you also copy the format of the original cells into the target cells. What if you just want to copy the values from the original cells, but retain the formatting already applied in the target cells?

You probably already know that you can use the Paste Special option from the Home tab of the ribbon (Excel 2007 and 2010) or the Edit menu (older versions of Excel), and then choose the Values option to paste just the values. If the target cells are right next to the original cells, there is an even easier way to accomplish the same task. Simply follow these steps:

1. Select the original cells whose values you want to copy.
2. Right-click on the fill handle (at the bottom right-corner of the selection) and drag the selection to encompass the target cells. When you release the mouse button, a Context menu appears.
3. Choose the Fill Values option. Excel fills the target cells with the values from the original cells; the formatting remains unchanged.

Copyright © 2011 by Sharon Parq Associates, Inc. Reprinted by permission. Thousands of free Microsoft Excel tips can be found online at <http://excel.tips.net>.

KEGS GENERAL MEETING AND ASSOCIATED SIGS

KEGS T-shirts

Remember, you score extra KEGABUCK\$ when you wear your KEGS shirts to SIGS and the General Meetings! (NOTE: This extra credit is not honored at the PIG SIG.)

We still have a few left of various sizes. Then we will order more. So why wait? Pick yours up at the next general meeting.

General Meetings at the Kirkland Teen Union Building - 348 Kirkland Ave., Kirkland, WA 98033

Day of Month	Time	Location	SIG / Email contact	SIG Leader
2nd Monday	6 PM - 7 PM	Kirkland Teen Union Building	Technology Corner betacode@hotmail.com	Steve Fondren
2nd Monday	7 PM - 9 PM	Kirkland Teen Union Building	KEGS General Meeting	
2nd Monday	9:30 PM - ? PM	Outback Steakhouse 12120 NE 85 th, Kirkland	Pig SIG sallyannmowrey@msn.com	Sally Ann Mowrey 206-996-5635

DRIVING INSTRUCTIONS: From I-405, take the N.E. 85th ST. exit (exit number 18) toward KIRKLAND (headed West). Immediately move to the center lane and take a left at the first light onto Kirkland Way (If you went right you would be on 114th Ave NE). Just stay on Kirkland Way and it will turn into Kirkland Ave.

The Kirkland Teen Union Building is part of a string of connected buildings. Right at the street is Kirkland's Performing Arts Center, then comes the Kirkland Senior Center and farthest from the street is The Kirkland Teen Union Building.

There is a parking area to the West of this building but you can also park in the Kirkland Library's covered parking area just a little farther to the West (1/4 block past the Performing Arts Center).



KEGS SIG MEETINGS:

NEW SIG CHART

Notice that this SIG chart no longer lists actual dates. Please check our KEGS calendar (at <http://www.kegs.org/Calendar.html>) for actual dates AND POSSIBLE CANCELLATIONS of the upcoming meeting that you want to attend.

Contact the SIG leaders to find out what presentations that they have planned for their upcoming meetings.

KEGS T-shirts

Remember, you score extra KEGABUCK\$ when you wear your KEGS shirts to SIGS and the General Meetings! We still have a few left of various sizes. Then we will order more. So why wait? Pick yours up at the next meeting.

Meetings at the North Bellevue Community / Senior Center - 4063 148th Ave NE, Bellevue, WA

Day of Month	Time	Location	SIG / Email contact	SIG Leader
1st Tuesday	7 PM - 9 PM	Conf. room D	HTML SIG jackbewitch@comcast.net	Jack Beslanwich 206-723-9960
1st Wednesday	7 PM - 9 PM	Conf. room D	Seattle Internet User Group seasigi@kegs.org	Marianne Wilkins
2nd Tuesday	7 PM - 9 PM	Computer Lab	Computer Support SIG - N. Bellevue j_m_mraz@hotmail.com (Computer repair & maintenance)	Joe Mraz 425-747-2433
2nd Wednesday	7 PM - 9 PM	Conf. room D	Computer Use and Optimization ctheprof@aol.com	Carl Von Papp 425-643-1398
3rd Tuesday	7 PM - 9 PM	Conf. room D	Servers, Networks and Storage daviddodge1@compuserve.com	David Dodge
3rd Wednesday	7 PM - 9 PM	Conf. room D	Small Office / Home Office (SOHO) r_cowger@prodigy.net	Ron Cowger
4th Tuesday	7 PM - 9 PM	Conf. room D	Digital Imaging SIG sallyannmowrey@msn.com	Sally Ann Mowrey 206-996-5635
4th Wednesday	7 PM - 9 PM	Conf. room D	KEGS Board Meeting r_cowger@prodigy.net	Ron Cowger

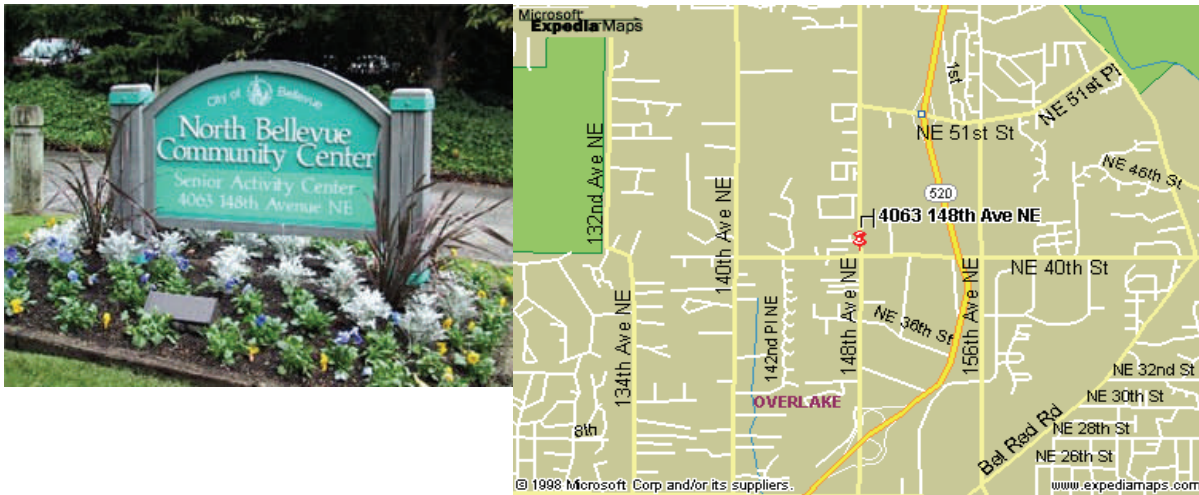
SIG MEETING LOCATIONS:

Please note that the KEGS Board meetings are not held at our General Meeting or SIG meeting locations

- KEGS Board Meetings are currently held at The North Bellevue Community / Senior Center - 4063 148th Ave NE, Bellevue, WA Conf. Rm D, 7-9 PM on the 4 Wed. of the month (Board meetings are public and open to anyone who wants to attend.)

Finding our primary SIG meeting location

DRIVING INSTRUCTIONS: Thanks to the improvements to SR 520, you may now use the new NE 40th St exit. If you are driving towards Redmond, exit and turn left to go over the overpass. If you are coming from Redmond, exit and turn right. Go to 148th Ave NE, and turn right. In very short order, you will see the North Bellevue Community / Senior Center sign on the left side of the roadway.



HISTORY & CONTACT INFO:

KEGS was formed in late 1996 to meet the needs of personal computer users in the Greater Seattle Area. KEGS is a nonprofit organization that holds its general meetings on the second Monday of each month.

In addition, KEGS sponsors a number of special interest groups (SIGs) that meet regularly to share common interests, learn new techniques, and resolve questions about the use of personal computer hardware, accessories, or software.

For a detailed listing of our SIG's, updated information about KEGS activities, and more, please see our web site at:

<http://www.kegs.org>.

Contact us at: Email: info@kegs.org
The Komputer Enthusiasts of Greater Seattle
PMB# 195
677 120th Ave NE, Suite 2A
Bellevue, WA 98005
Or call 425-747-2433 before 9 PM

To submit articles or software reviews for incorporation into this Newsletter, please send them to: newsletter@kegs.org