



July, 2010

Volume 14, Issue 7

TAPPING THE

**K . E . G . S .**

KOMPUTER ENTHUSIASTS OF GREATER SEATTLE

Prez Says:

**Ron Cowger**

Happy 4<sup>th</sup> of July everyone! I hope that you have an opportunity to participate in a celebration on this great holiday that salutes our wonderful nation. I know that we all complain from time to time about our governments, both federal and local, and how we think the country could be run differently and hopefully better. However, I hope that we will all agree that even though our nation is imperfect, it's the best one on earth and I wouldn't want to live anywhere else. If you are going to celebrate the 4<sup>th</sup> by shooting off a few fireworks of your own, please do it safely. After all, you need all of your fingers to operate your computer efficiently.

The General Meeting in June was dedicated to the annual KEGaBuck\$ Auction. We had a wide cross section of articles varying from many types of software through laptop carrying bags to complete PCs. My thanks to all of you who donated items for the Auction. We were thrilled to have over 230 items up for bid! Many items went for 50 KEGaBuck\$ so I hope no one felt that they couldn't afford any of the items offered. Just for your information, the highest bid was for 8250 KEGaBuck\$ for a copy of Windows 7 Ultimate. Wow! I want to offer my sincere thanks for all of the members who worked so hard on the Auction, especially Sally Ann Mowrey, Judy Panjeti, Barbara Marasco, Joe Mraz, Joseph Nowak and Dick Arensberg. We wouldn't have been able to do it without them.

Bob Baxter has made arrangements for the presenters for the July General Meeting. Bob created an excellent description of the topic for the KEGS Calendar so I will quote it here. "Rob Viens and Marlin Miller will review the Video Phone offered by American Communications Network or ACN Telecommunications. ACN is the world's largest direct seller of telecom services. With the ACN digital video phone equipment and the associated broadband service, you can see the person you're talking to and they can see you. Of course you both need compatible equipment. You can use the phone as a digital photo frame when you are not making calls with it. The service provides you with video mail and messaging, an enhanced phone book, customized ring tones and many more features not available with other types of phones. And since it is using broadband, it is an internet phone; so many calls can be free. Come learn how this equipment and service works."

To date we have not received any member-provided tips and tricks concerning computer/software use to include on our web site. If you have tips that you would like to offer for this purpose, please forward them to me. I will act as a clearing function to try to organize the tips and to avoid duplicates. Joe has suggested that he will set up a special email address to which tips can be forwarded and I will provide that address to you soon. In the meantime, if you have tips to offer, you may send them to me at the email address [president@kegs.org](mailto:president@kegs.org). Thanks.

This month there are two new tips from Sharon Parq Associates added to our monthly newsletter.



July, 2010

Volume 14, Issue 7

## Prez Says: continued

There is one for using Word and the other for Excel, each designed to expand our knowledge of these applications. If you want access to additional tips from this company, you can go to their websites at [word.tips.net](http://word.tips.net) or [excel.tips.net](http://excel.tips.net). I think you'll find the information interesting and useful.

So far this year, fifty-eight computer enthusiasts have joined or renewed their memberships in KEGS. Thanks very much for your confidence in the organization. We finished 2009 with sixty-three members in our group. We still need to focus on building our membership throughout 2010. I encourage those of you who have not yet done so to renew your memberships as soon as possible. Renewal forms are available from John Tate, our Treasurer, or you can fill out the form on the KEGS web site, print it out and send it along with your check to the address shown on the form. An even easier way would be to bring your completed form and your check to the next General Meeting and give it to John there.

That's it for now. I hope to see each of you at your favorite SIG. Unfortunately, I will miss the July General Meeting as I will be out of town on a short vacation. I wish you happy and safe computing!

*Ron Cowger*  
*President*



July, 2010

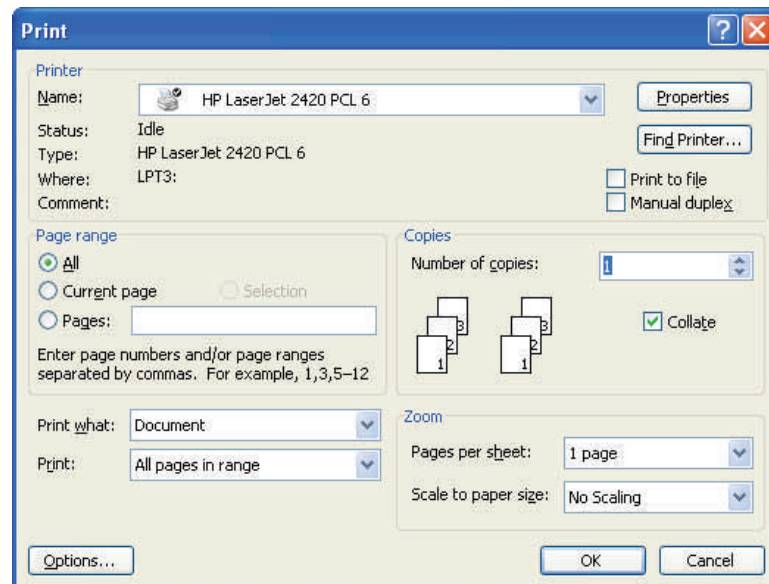
Volume 14, Issue 7

## Word Tip of the Month

### *Printing More Than One Copy*

Microsoft Word gives you complete control over how it prints your document. If desired, you can print more than one copy of your document. To print to a file, follow these steps:

1. Choose Print from the File menu. You will see the Print dialog box. (To display the Print dialog box in Word 2007, click the Office button and then click Print.) A really quick way to display the Print dialog box is to simply press **Ctrl+P**.



*The Print dialog box.*

2. In the Copies box, indicate the number of copies you want to print.
3. In the Range box, specify what you want to print.
4. Check the status of the Collate option. (Select or clear the option based on whether you want the pages of each copy printed in order or not.)
5. Click on OK.



July, 2010

Volume 14, Issue 7

## Excel Tip of the Month

### *Counting Cells with Specific Characters*

Let's say that you have a Microsoft Excel worksheet that contains all the people who have ever worked in your department. Each name is prefaced by a single character that indicates the status of the person. For instance, if Fred Davis were retired, his name might show up as "RFred Davis". With quite a lot of these names in the worksheet, you may need a way to count those people with a specific status character.

The easiest way to accomplish this is to use the COUNTIF function. If, for instance, the status character is the letter R (for "retired"), and your range of names is in cells A5:A52, then you could use the following to determine which cells begin with the letter R:

```
=COUNTIF(A5:A52, "R*")
```

The formula works because the comparison value is R\*, which means "the letter R followed by any other characters." Excel dutifully returns the count. To search for a different status character, simply replace R with the desired status character.

Obviously, if the asterisk has a special meaning in this usage, you can't search directly for an asterisk. Actually, there are three characters you cannot search for directly: the asterisk (\*), the question mark (?) and the tilde (~). If you want to search for any of these characters, you must precede the character with the tilde. Thus, if you wanted to determine a count of names that had a question mark as a status code, you could use the following:

```
=COUNTIF(A5:A52, "~?*")
```

An alternative to using COUNTIF is to create an array formula that is applied to every cell in the range. The following will do the trick very nicely:

```
=SUM((LEFT(A5:A52, 1)="R") * 1)
```

This must, of course, be entered as an array formula. This means that instead of pressing **ENTER** at the end of the formula, you would press **SHIFT+CTRL+ENTER**. The formula checks the left-most character of a cell, returning the value TRUE if it is R or FALSE if it is not. The multiplication is done to convert the TRUE/FALSE value to a number, either 1 for TRUE or 0 for FALSE. The SUM function returns the sum, or count, of all the cells that meet the criteria.

# KEGS GENERAL MEETING AND ASSOCIATED SIGS

## KEGS T-shirts

Remember, you score extra KEGABUCK\$ when you wear your KEGS shirts to SIGS and the General Meetings! (NOTE: This extra credit is not honored at the PIG SIG.)

We still have a few left of various sizes. Then we will order more. So why wait? Pick yours up at the next general meeting.

General Meetings at the Kirkland Teen Union Building - 348 Kirkland Ave., Kirkland, WA 98033

Day of Month	Time	Location	SIG / Email contact	SIG Leader
2nd Monday	6 PM - 7 PM	Kirkland Teen Union Building	Technology Corner <a href="mailto:betacode@hotmail.com">betacode@hotmail.com</a>	Steve Fondren
2nd Monday	7 PM - 9 PM	Kirkland Teen Union Building	KEGS General Meeting	
2nd Monday	9:30 PM - ? PM	Outback Steakhouse 12120 NE 85 th, Kirkland	Pig SIG <a href="mailto:sallyannmowrey@msn.com">sallyannmowrey@msn.com</a>	Sally Ann Mowrey 206-996-5635

**DRIVING INSTRUCTIONS:** From I-405, take the N.E. 85th ST. exit (exit number 18) toward KIRKLAND (headed West). Immediately move to the center lane and take a left at the first light onto Kirkland Way (If you went right you would be on 114th Ave NE). Just stay on Kirkland Way and it will turn into Kirkland Ave.

The Kirkland Teen Union Building is part of a string of connected buildings. Right at the street is Kirkland's Performing Arts Center, then comes the Kirkland Senior Center and farthest from the street is The Kirkland Teen Union Building.

There is a parking area to the West of this building but you can also park in the Kirkland Library's covered parking area just a little farther to the West ( 1/4 block past the Performing Arts Center).



# KEGS SIG MEETINGS:

## NEW SIG CHART

Notice that this SIG chart no longer lists actual dates. Please check our KEGS calendar (at <http://www.kegs.org/Calendar.html>) for actual dates AND POSSIBLE CANCELLATIONS of the upcoming meeting that you want to attend.

Contact the SIG leaders to find out what presentations that they have planned for their upcoming meetings.

## KEGS T-shirts

Remember, you score extra KEGABUCK\$ when you wear your KEGS shirts to SIGS and the General Meetings! We still have a few left of various sizes. Then we will order more. So why wait? Pick yours up at the next meeting.

Meetings at the North Bellevue Community / Senior Center - 4063 148th Ave NE, Bellevue, WA

Day of Month	Time	Location	SIG / Email contact	SIG Leader
2nd Tuesday	7 PM - 9 PM	Conf. room D	Digital Video SIG <a href="mailto:jackbewitch@comcast.net">jackbewitch@comcast.net</a>	Jack Beslanwich 206-723-9960
1st Wednesday	7 PM - 9 PM	Conf. room D	Seattle Internet User Group <a href="mailto:seasigi@kegs.org">seasigi@kegs.org</a>	Marianne Wilkins
2nd Tuesday	7 PM - 9 PM	Conf. room D	WIN 95/98/XP/?? <a href="mailto:daviddodge1@compuserve.com">daviddodge1@compuserve.com</a>	David Dodge
2nd Wednesday	7 PM - 9 PM	Conf. room D	Laptop SIG <a href="mailto:ctheprof@aol.com">ctheprof@aol.com</a>	Carl Von Papp 425-643-1398
3rd Tuesday	7 PM - 9 PM	Computer Lab	Computer Support SIG - N. Bellevue <a href="mailto:j_m_mraz@hotmail.com">j_m_mraz@hotmail.com</a> (Computer repair & maintenance)	Joe Mraz 425-747-2433
3rd Wednesday	7 PM - 9 PM	Conf. room D	Small Office / Home Office <a href="mailto:r_cowger@prodigy.net">r_cowger@prodigy.net</a>	Ron Cowger
4th Tuesday	7 PM - 9 PM	Conf. room D	Digital Imaging SIG <a href="mailto:sallyannmowrey@msn.com">sallyannmowrey@msn.com</a>	Sally Ann Mowrey 206-996-5635
4th Wednesday	7 PM - 9 PM	Conf. room D	HTML SIG <a href="mailto:jackbewitch@comcast.net">jackbewitch@comcast.net</a>	Jack Beslanwich 206-723-9960

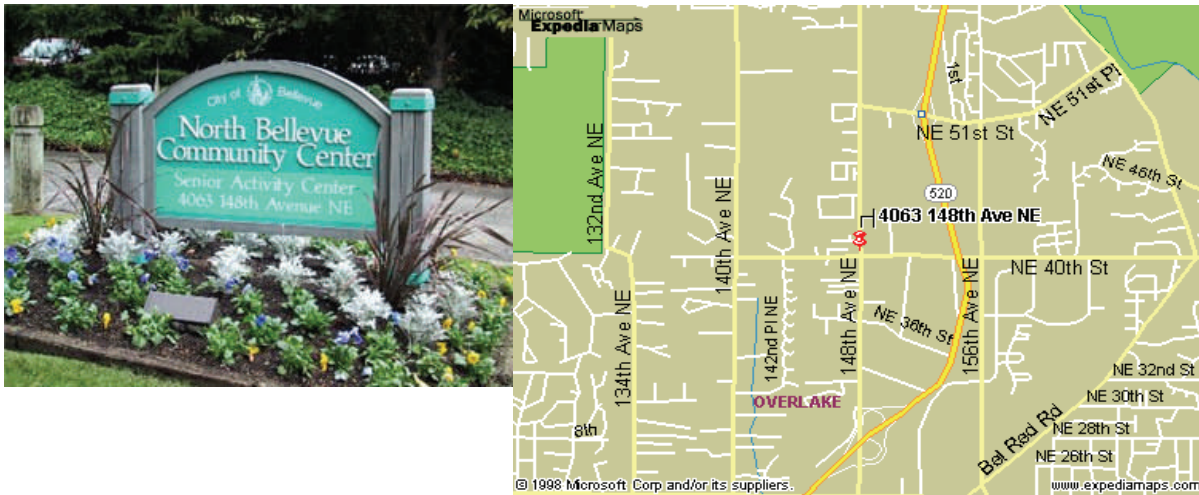
## SIG MEETING LOCATIONS:

Please note that the KEGS Board meetings are not held at our General Meeting or SIG meeting locations

- KEGS Board Meetings are currently held at Executive Real Estate's Bellevue office at 20 Lake Bellevue, Bellevue, WA. (Board meetings are public and open to anyone who wants to attend.)

### Finding our primary SIG meeting location

**DRIVING INSTRUCTIONS:** Thanks to the improvements to SR 520, you may now use the new NE 40th St exit. If you are driving towards Redmond, exit and turn left to go over the overpass. If you are coming from Redmond, exit and turn right. Go to 148th Ave NE, and turn right. In very short order, you will see the North Bellevue Community / Senior Center sign on the left side of the roadway.



## HISTORY & CONTACT INFO:

KEGS was formed in late 1996 to meet the needs of personal computer users in the Greater Seattle Area. KEGS is a nonprofit organization that holds its general meetings on the second Monday of each month.

In addition, KEGS sponsors a number of special interest groups (SIGs) that meet regularly to share common interests, learn new techniques, and resolve questions about the use of personal computer hardware, accessories, or software.

For a detailed listing of our SIG's, updated information about KEGS activities, and more, please see our web site at:

<http://www.kegs.org>.

Contact us at: Email: [info@kegs.org](mailto:info@kegs.org)  
The Komputer Enthusiasts of Greater Seattle  
PMB# 195  
677 120th Ave NE, Suite 2A  
Bellevue, WA 98005  
Or call 425-747-2433 before 9 PM

To submit articles or software reviews for incorporation into this Newsletter, please send them to: [newsletter@kegs.org](mailto:newsletter@kegs.org)